

MAGNIFIQUE

EVENTS



Live the French way

S O F I T E L

SYDNEY DARLING HARBOUR

The Hotel

Rooms & Suites

Club Millesime

Restaurant & Bars

Conference & Event Packages

Capacity

Audio Visual

Contact

“

GREG BRADY
GENERAL MANAGER

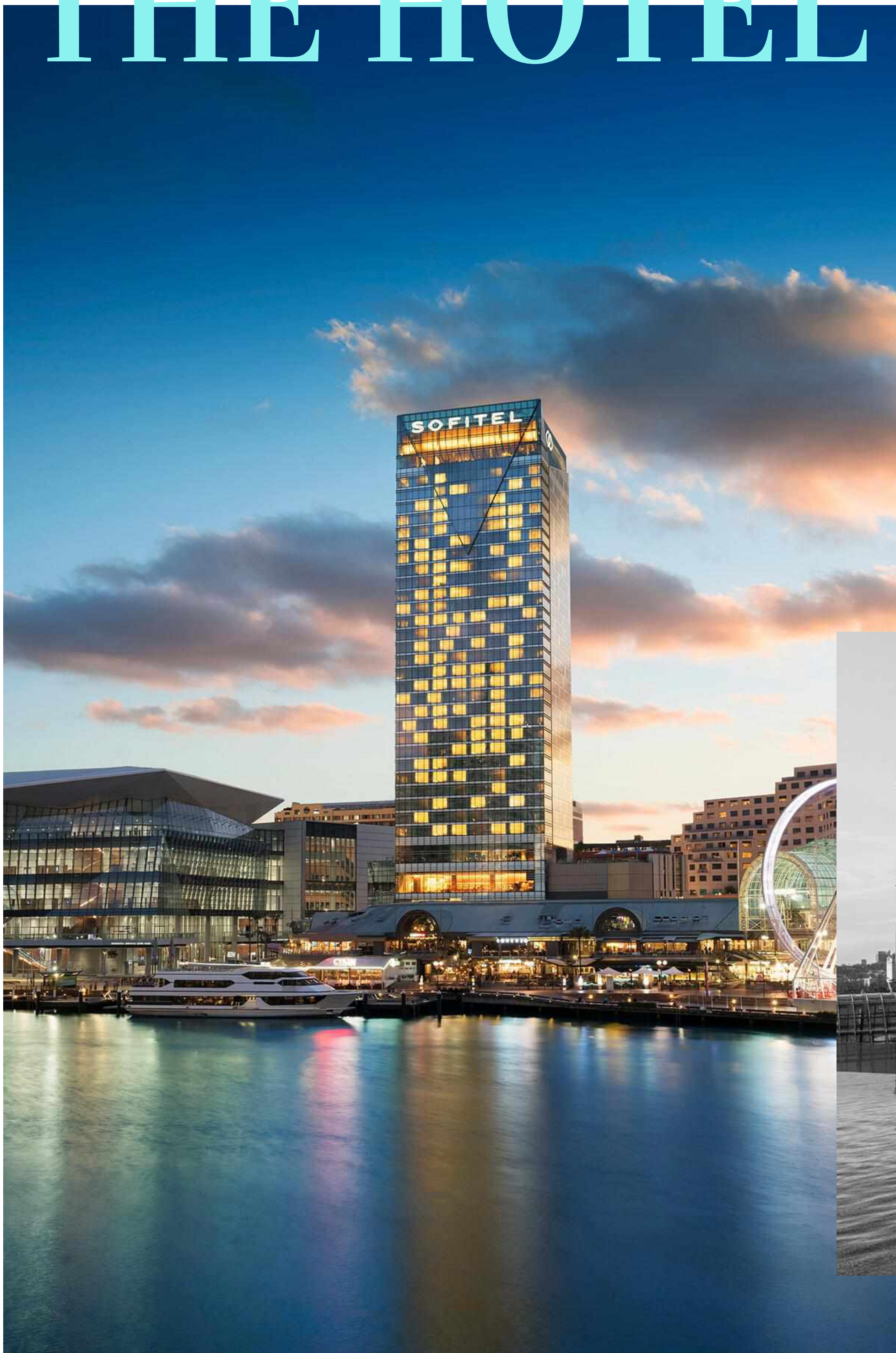
IN FRANCE, THE ART OF LIVING REVEALS ITSELF
AS AN INNATE APPRECIATION OF
BEAUTY, ELEGANCE AND STYLE.

”

THE HOTEL

AUSTRALIAN LUXURY HOTEL OF THE YEAR - 2019

- Awarded Best Luxury Hotel in Australia - 2019 (Hotel Management Awards)
- Newest 5-Star Luxury Hotel in Sydney - opened Oct 2017
- Sydney harbourside location in vibrant Darling Harbour, with boat wharf steps away
- Accommodation blocks up to 400 rooms / event spaces for up to 450 people
- Next door to the NEW International Convention Centre (ICC) - no event is too big for us!
- Outdoor infinity pool and 24/7 gym - with Harbour views!
- Accor's industry-leading ALLSAFE hygiene & cleanliness label
- Extensive recycling & sustainability program
- Let us light up our (6-star green rated) building with your corporate colours!!!



Superior

35sqm, king or 2 double beds



Superior Darling Harbour View

35sqm, king or 2 double beds, Darling Harbour view



SUPERIOR ROOMS



Relax in your 35sqm (376sqf) room, a tranquil haven above the city's frenetic hum. Pamper yourself with bespoke French amenities and awake refreshed after a night in either one sumptuous king size or two double Sofitel MyBeds™.

Luxury Corner

35sqm, king with bathtub

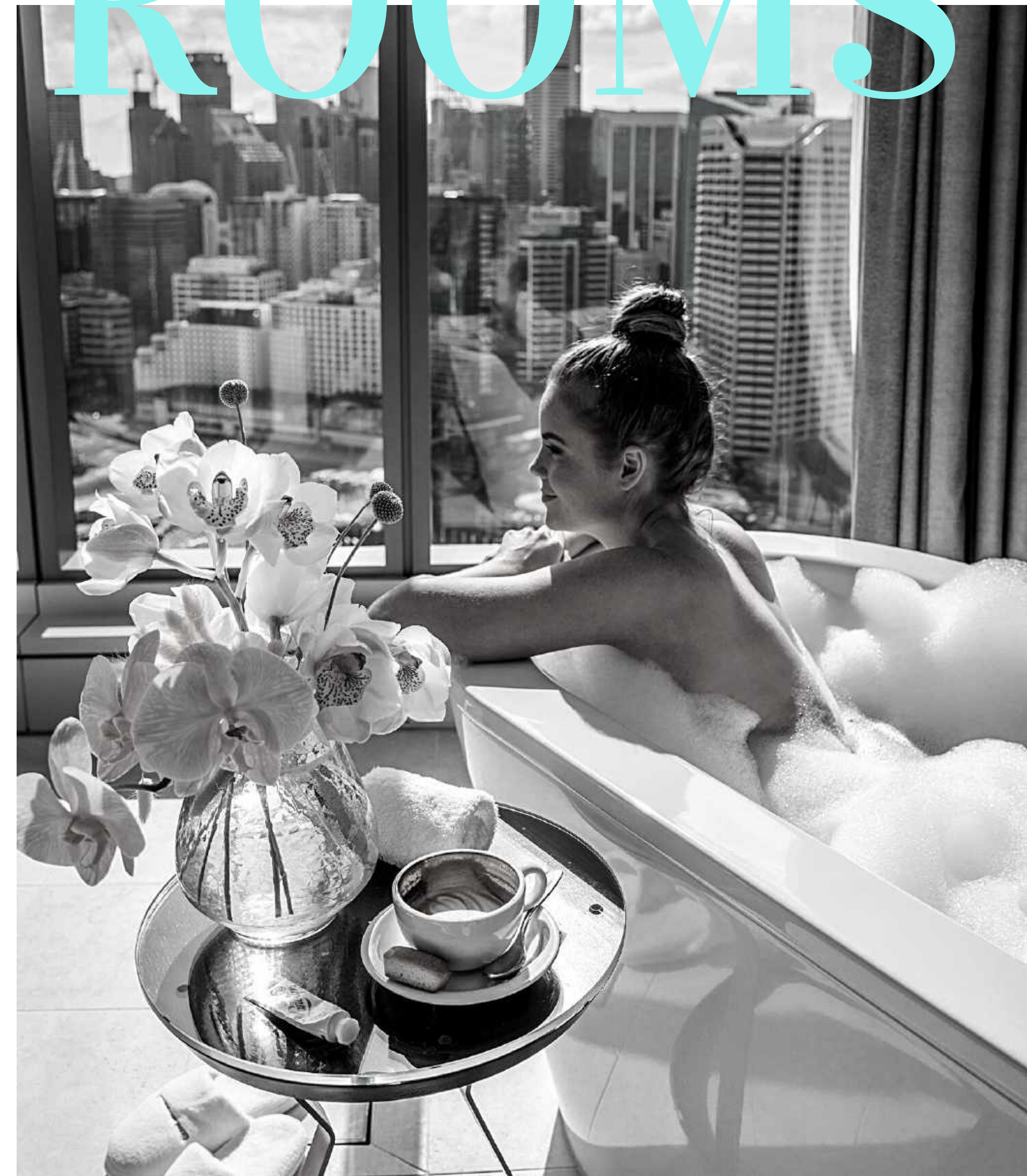


Luxury Corner Darling Harbour View

35sqm, king with bathtub, Darling Harbour View



LUXURY ROOMS



Soak in your corner bathtub with bespoke French amenities before sinking into your Sofitel MyBed™. Unwind in contemporary French-inspired comfort in your 35sqm (376sqf) room, a peaceful retreat for the night.

SUITE LIFE

Junior Suite

53sqm, king with bathtub, Darling Harbour view, Club Millesime benefits



Prestige Suite

74sqm, king with bathtub, separate living, Darling Harbour view, Club Millesime benefits



Luxuriate in breathtaking skyline views from the comfort of your spacious suite. Enjoy the freedom you need to relax with access the exclusive Club Millésime, located 35 floors above the city. Unwind in your bath with bespoke French amenities or Sofitel MyBed. Ask us about our Bellerive Suite where guests wake up to top-floor views of the sun rising over Sydney in your palatial 112sqm (1,205sqf) suite.

CLUB

MILLÉSIME

Exclusive club lounge by day,
now available for exclusive-use
events by night. Inquire today!



AN EXCLUSIVE RETREAT 35 FLOORS ABOVE THE CITY

Luxury should be limitless: savour the magnifique experience as a privileged Club Millésime member. Club Millésime benefits include:

- exclusive access to Club Millésime Lounge located on level 35, during opening hours
- priority check-in/out
- daily breakfast in lounge
- food & beverage refreshments through the day
- complimentary afternoon tea and early evening beverages with canapés
- dedicated Guest Services Manager and butler service

RESTAURANT

ATELIER



Restaurant capacity: 190 (or 300 post-COVID)
Group, section and exclusive use bookings available
Private dining room capacity: 40
W: atelierbysofitel.com
E: atelier.sydney@sofitel.com
Stay social: [@atelierbysofitel](https://www.instagram.com/atelierbysofitel)



“

ONE CANNOT THINK WELL,
LOVE WELL, SLEEP WELL,
IF ONE HAS NOT DINED WELL

”

Honouring traditions from the South of France, and culinary masters past and present, Atelier by Sofitel is offering French food lovers a gourmet dining experience with the time, space, and service to savour every moment. A contemporary French bistro for the unapologetic lovers of food.

CHAMPAGNE BAR

**EXCLUSIVE-USE EVENTS
AVAILABLE**

Bar capacity: 73 (or 200 post-COVID)

Sunday to Thursday 5pm - late

Friday and Saturday 3pm - late

W: champagnebarsydney.com

E: champagnebar.sydney@sofitel.com

Stay Social: [@champagnebarsydney](https://www.instagram.com/champagnebarsydney)

[#champagnebarsydney](https://www.instagram.com/champagnebarsydney)



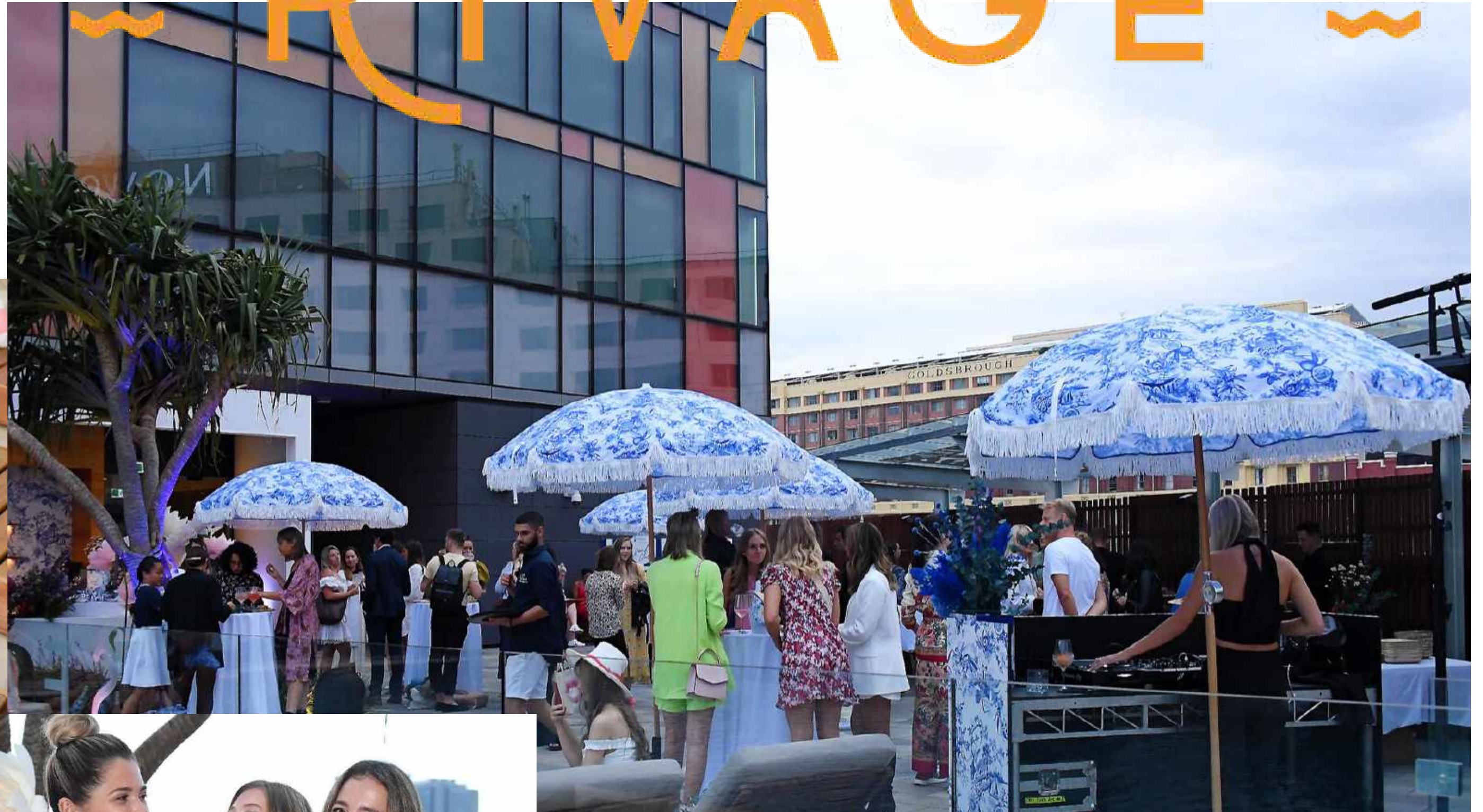
THE ART OF SABRAGE

Special occasions deserve spectacular traditions. Pulling out a sword and cracking open a bottle., there's a move that's got class, right? Have your champagne opened by a sabre in the French art of sabrage. You'll never drink champagne the same again.

A LUXE OUTDOOR INFINITY
POOL WITH VIEWS
UNMATCHED IN SYDNEY

Le RIVAGE

POOL BAR



A sophisticated poolside experience, overlooking the magnificent harbour and Sydney skyline. A place to socialise, sip cocktails and enjoy great food. Explore unique branding opportunities and take advantage of endless instagrammable angles.

Cocktail Capacity: 93 (or 100 post-COVID)

Elevated event ideas:

- Product Launch
- Cocktail party
- Photoshoot
- Sunrise Yoga by the pool
- Outdoor event breaks

“

ERIC COSTILLE, EXECUTIVE CHEF

**WE INVITE YOU TO DINE AS THE FRENCH DO,
AND SAVOUR THE FLAVOURS OF
OUR PASSIONATELY CRAFTED MENUS.
YOU ARE IN GOOD HANDS.**

”



CONFERENCE PACKAGES



ELEVATED EVENTS:

- Barista coffee cart + \$1,500 per day
- Lunch upgrade to Atelier Restaurant
- All vegan menu
- In-Suite private events
- Post-Event Gin Trolley or drinks in Champagne Bar

BREAKFAST

Continental breakfast from \$40
Minimum 8 guests

Buffet breakfast from \$55
Minimum 20 guests

FULL DAY DELEGATE PACKAGE \$115

Arrival tea and coffee
Morning tea
Magnifique working lunch
Afternoon tea
Sparkling and mineral water
Notepads and pens

HALF-DAY DELEGATE PACKAGE \$105

Arrival tea and coffee
Selection of either morning tea or
afternoon tea
Magnifique working lunch
Sparkling and mineral water
Notepads and pens



LUNCH & DINNER

SANDWICH WORKING LUNCH

Selection of sandwiches, served with Pommes Frites and garden salad.
From \$45 per guest

PLATED

2 courses from \$70
3 courses from \$95
Alternate serve from \$6 per course
Minimum of 15 guests



COCKTAIL CANAPÉ PACKAGES



- | | |
|---------|---|
| 30 mn | We recommend a minimum of 5 canapés (from \$25) per person |
| 1 hour | We recommend a minimum of 8 canapés (from \$40) per person: 6 canapés, 2 substantials |
| 2 hours | We recommend a minimum of 12 canapés (from \$60) per person: 10 canapés, 2 substantials |
| 3 hours | We recommend a minimum of 15 canapés (from \$95) per person: 11 canapés, 4 substantials |



BEVERAGES

SUPERIOR PACKAGE

- 1-hour Package from \$40 per person
- 2-hour Package from \$45 per person
- 3-hour Package from \$50 per person
- 4-hour Package from \$55 per person
- 5-hour Package from \$60 per person

LUXURY PACKAGE

- 1-hour Package from \$52 per person
- 2-hour Package from \$59 per person
- 3-hour Package from \$66 per person
- 4-hour Package from \$73 per person
- 5-hour Package from \$80 per person

PRESTIGE PACKAGE

- 1-hour Package from \$57 per person
- 2-hour Package from \$64 per person
- 3-hour Package from \$71 per person
- 4-hour Package from \$78 per person
- 5-hour Package from \$85 per person



FOOD STATIONS

ARTISAN CHARCUTERIE PLATE

From \$16 per person
Prosciutto, Pork rillettes, country terrine, coppa, salami, mustard selection, marinated vegetables, cornichons, grilled bread, lavosh

CHEESE PLATE

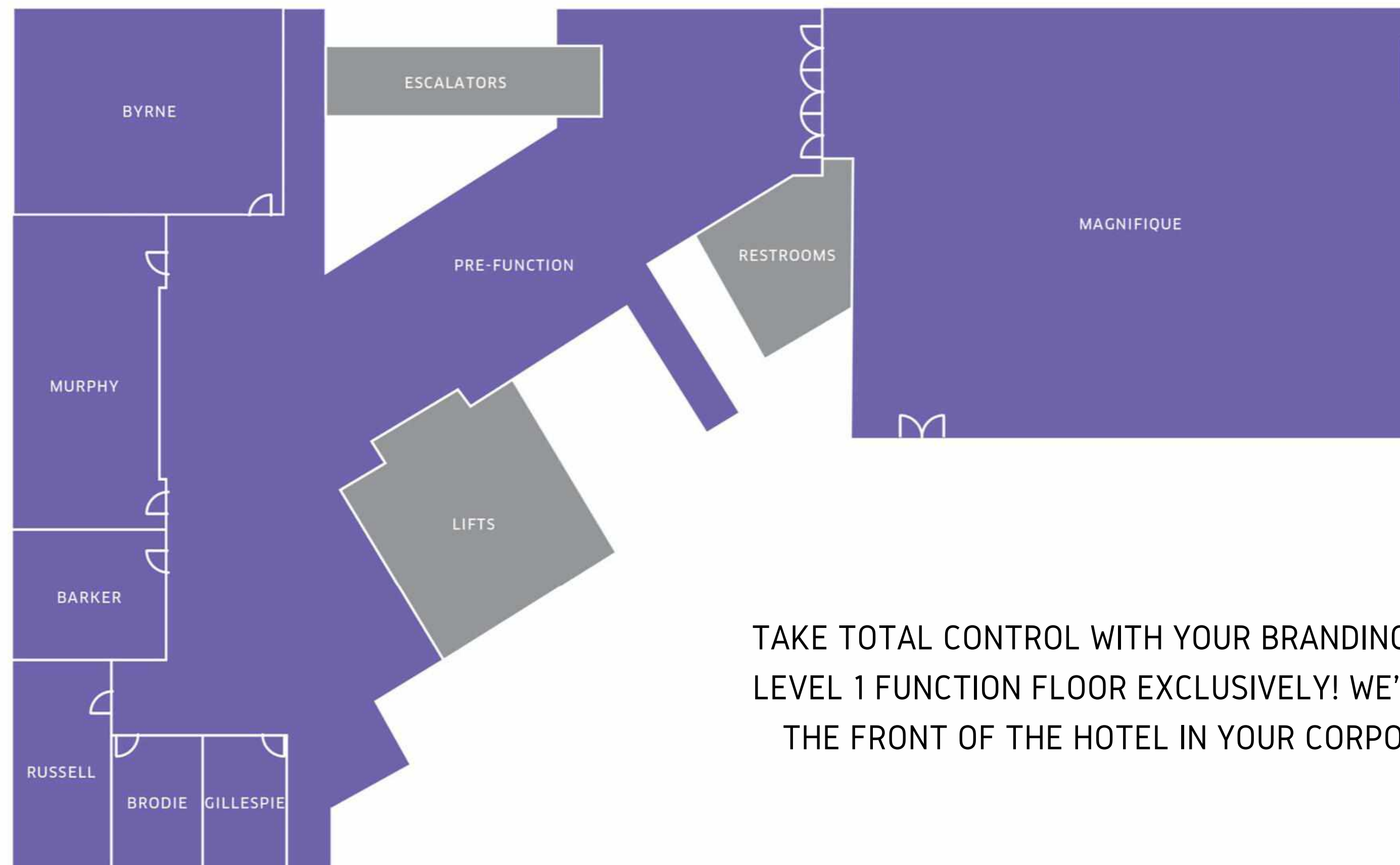
From \$14 per person
Soft flowery, washed rind, hard, blue, goat cheese (selection of 3). Bread rolls and crackers, dried fruits, Muscat, grapes, fig jam, walnuts

DESSERT PLATE

From \$16.50 per person
Selection of 3 (madeleines, assorted macarons, mini éclairs, vanilla crème brûlée, mini tartelettes, chocolate brownies, assorted délices)

CAPACITY & FLOOR PLAN

(COMPLIANT WITH COVID-SAFE SOCIAL DISTANCING, JULY 2020)



TAKE TOTAL CONTROL WITH YOUR BRANDING BY BOOKING THE LEVEL 1 FUNCTION FLOOR EXCLUSIVELY! WE'LL EVEN LIGHT UP THE FRONT OF THE HOTEL IN YOUR CORPORATE COLOURS!

FUNCTION ROOMS	PURPOSE	SURFACE	HEIGHT	THEATRE	CLASSROOM	BOARDROOM	CABARET	COCKTAIL	BANQUET
MAGNIFIQUE	BALLROOM	497sqm / 5,350sqf	5 (16.4f)	118 (450 post-COVID)	77 (276 post-COVID)	26 (80 post-COVID)	87 (270 post-COVID)	118 (450 post-COVID)	87 (300 post-COVID)
BYRNE	MULTIPURPOSE ROOM	112sqm / 1,205sqf	4 (13f)	26 (103 post-COVID)	16 (60 post-COVID)	12 (34 post-COVID)	15 (54 post-COVID)	26 (103 post-COVID)	15 (66 post-COVID)
MURPHY	MULTIPURPOSE ROOM	95sqm / 1,023sqf	4 (13f)	20 (94 post-COVID)	19 (55 post-COVID)	14 (32 post-COVID)	18 (54 post-COVID)	20 (94 post-COVID)	18 (60 post-COVID)
BARKER	MULTIPURPOSE ROOM	38sqm / 409sqf	4 (13f)	8 (43 post-COVID)	6 (18 post-COVID)	6 (14 post-COVID)	6 (16 post-COVID)	8 (30 post-COVID)	6 (20 post-COVID)
RUSSELL	FIXED BOARDROOM	37sqm / 398sqf	4 (13f)			9 (14 post-COVID)			
BRODIE	FIXED BOARDROOM	22sqm / 237sqf	4 (13f)			5 (10 post-COVID)			
GILLESPIE	FIXED BOARDROOM	22sqm / 237sqf	4 (13f)			3 (10 post-COVID)			
PRE-FUNCTION AREA		200sqm / 2,153sqf	4 (13f)					62	



AUDIO VISUAL

LET'S GET TECHNICAL

Sofitel Sydney Darling Harbour's production is managed in-house by Audio Visual Dynamics (AVD), offering the highest quality AV services with state-of-the-art equipment including a large-scale LED wall.

The AVD team work alongside the Sofitel Sydney Darling Harbour Conference & Events department to ensure a flawless 5-star Sofitel experience for yourself and each of your delegates.

CONTACT

+61 2 8388 8864 or e-mail details directly to
SofitelSydneyDarlingHarbour@avdynamics.com.au



Contact us today

SOFITEL SYDNEY DARLING HARBOUR
12 DARLING DRIVE - SYDNEY NSW 2000
TEL 02 8388 8888 - H9729-SB5@SOFITEL.COM
WWW.SOFITELDARLINGHARBOUR.COM
WWW.ATELIERBYSOFITEL.COM
WWW.CHAMPAGNEBARSYDNEY.COM.AU

S O F I T E L
SYDNEY DARLING HARBOUR